

67 \$/3+21686

& \$ 7 + 2 / , &
& 2 0 0 8 1 , 7 <
(VW

6W \$OSKRQVXV &DW KROLF &KXUFK

(/RJDQ /HPRQW

3DULVK 2IILFH &HQWHU

) D [

5HOLJLRXV (G 2IILFH

6FKRRO 2IILFH

: 'DYH\ 5RDG

:HEVLWH ZZZ VW DOV R J

(PDLO VWDOV OHPRQW #FRPFDVW QHW

6XPPHU %XVLQHVV +RX JV

0RQGD\ WKUX 7KXUVGD\ DP SP

)ULGD\ DP SP

0DVV 6FKHGXOH

:HHNHQG 6FKHGXOH

6DWXUGD\ SP 9LJL 0DVV

6XQGD\ DP DP DQG DP

6XPPHU :HHNGD\ 7UL± 3DULVK 6FKHGXOH

0RQGD\ 6DWXUGD\ DP Q WKH FKXUFK

-XQH ± -XQH 26W \$OSKRQVXV

+RO\ 'D\ WR EH DQQRXQFHG

(XFKDULVWLF \$GRU DV LRQ

7XHVGD\2 DP2 SP FDSHO

6DFUDPHQWDO /L H

5HFRQFLOLDWLRQ

6DWXUGD\2 WR SP

2U E\ DSSRLQWPHQW

%DSWLVP

%DSWLVPV DUH XVXDOO\ F OHEUDWHG WKH VHFRQG

DQG WKLUG 6XQGD\ R H HU\ PRQWK

1R %DSWLVPV GXULQJ HQW

0DUULDJH

3URVSHFWLYH EULGH DQG JURRP PXVW EH

UHJLVWHUHG SDULVKLRQHUV IRU DW OHDVW PRQWKV

EHIRUH D ZHGGLQJ GDWH ED\ EH VFKHGXOHG

6LFN DQG +RPHRXQ

&RQWDFW WKH RIILFH WR UHFHLYH D

YLVLVW IURP D 0LQLVWH RI &DUH

**St. Alphonsus
Catholic Church
Parish Registration**

From Father Brian's Desk

Our New School Leader

(YHU\RQH \HDEV DQG ROGHU
VKRXOG UHJLVWHU IRU WKH WSDVLF
7R UHJLVWHU SOHDV HFDODYWKKLUHG D QHMZ 6W WWSULSHNR QVXMR 6 3UL
2IILFH &HQWHU 0RU 5REHUW 3ULHVVWHVW KD V RYHIG XFDHWLRQ
\RX FDQ UHJLVWHU RQOLQH DW
www.st-als.org.

WRHDQD ROHQFW W\KDFWD UDFI
D QHMZ 6W WWSULSHNR QVXMR 6 3UL
0RU 5REHUW 3ULHVVWHVW KD V RYHIG XFDHWLRQ
RQOLQH DW
6FKRRO 'LVWULFW NHZ DVUHR WIK ZRKHU QKSHU
(OPHQWDU\ VFKRRO V SULQFLSDO IURP

Parish Staff

Pastor

)U %ULDQ \$UGDJK

0U 3ULHVW LV D ZKQ DPKLV D HSDGVHULRQ IR

Part-time Associate Pastor

)U 7RP +RIIPDQ

HGXFDWLRQ DQG WLSRQURW XRXQ I RPLQHV LQ OH

Resident

)U 5REHUW 5RKU

ZHOFRPLQJ 0U 3ULHVVWHVW WIKHWQ HSDVHNRQ V X
6FKRRO ZKHUH ZH SURXGOLVSRFHODYLP RXU PI

Weekend Celebrant

)U /RX =DNH

Leaders Tomorrow"

Diaconal Ministry:

'HDFRQ 7HUU\ 0F*XLUH

Father's Day

'HDFRQ 'DQ 5LWWHQKRXVH

'HDFRQ %LOO /XEEHQ

Director of Religious Education

.HYLQ &RG\

Admin. Assistant for Religious Ed.

0HODQLH 7HUUD]DV

School Principal:

5HQHH 3D\QH

Pastoral Associate:

/LQGD 2\&RQRU

Office Coordinator:

5RVHDQQ /XFDV

Accountant:

&DUO /HYDV

Music Director

-RVHSK 0DUWRUDQR

Music Staff

'LDQH 0DUHOOL

SPRED: &DUO /HYDV

ZHHNHQG , ZRXOG OLNH WR
WIKHWQ HSDVHNRQ V X
FDOO XSRQ RXU IDWKRUM WIKHWQ HSDVHNRQ V X
VSLULWXDO IDWKUUV XSRRELHWJHQHJQ & HORYLQ
DORQJ ZLWK PRWUWH IDUKH WIKHWQ HSDVHNRQ V X
WKH\ DUH UROH PRGHXQCG ROLKYZ RZHWOZLD\NV L
SRVVLEOH +HQHIRU IDOORIV R KU)DWKHUV

*God our Father, in your wisdom and love
you made all things. Bless these men, that they may
be strengthened as Christian fathers. Let the exam-
ple of their faith and love shine forth. Grant that
we, their sons and daughters, may honor them
always with a spirit of profound respect. Amen.*

Religious Education Summer Intensive

Parish Pastoral

Council Members

0LNH %UXQR

%LOO 'RKHUW\

'LDQH .D\H

'HERUDK .RUQDFNH

6KDURQ .RVWHV

5R\ 7DP

7HUHVH 7XUQHU

-DPHV =XFFDUHOOL

Religious Education Summer Intensive Program

KDV
JRQH H[WUHPHO\ ZV DOWZRR IDUHN, WHRQJLRXV
SURJUDP IRU*UDGH VWXGHQWV YURXUXQH
FDWHFKLVWV DUH LQ WKH SURFHVV LFRV WXFH
DV WKH KLVWRU\ QIWKKH2,CGU DHHV WYUHQVW\W
DQG WKH YDULRXVK & IKVRIOLV K DUDXQWHLZU
ZRUGV DQG DFWLRQXQW) IRR PV WIKCH DPX KDYH Q
VWXGHQWV VHQIRWIRIEQJ UWHIOG SURJUDP

:HOF RPH *XHVWV DQGUHLVRLWBRG WKDW \RXU KHU QNDVJGLYQQJLWRHU \R
DFWLRQLQRXU OLYHV 2XU JRDO HLVHWIROSDURBYHGHDFRSPHUZKXIDG WKPHK
DWLQJORYHRI *RGVWRZDVWKSUHRXZH XE,QOWHLM WKDW WKH &KXUFK LVW
LQJ SUHVHQFH LQ WKH ZRUOG

“Please come to Mass early enough not to disrupt. Leave late enough not to insult (the Mass does not end until the final blessing). Worship reverently enough not to distract. And dress proudly enough not to offend.”

Reflecting on God’s Word

6LQFH HDUO\ WKLDP EHQIQZRHNQQT WRRSU KSDUZH ICHL QIQHL ODV ELUWKG
URVH KH ERXJKW IFKMKVHJHQGSDVRD EDNMQJHEDHDPHI&ODG WKGSKEX
FRRN KLV VSHFLDGHVZHEH YDWHWUWVHWWRESDHSDUHVVHQVWR ZUDS I
OLWWOH *HRUJHV PDDQG \$DLQWVWV "SHQFHUJOUHDEW' 7KH IDPLO\ JDWKH
EHJLQV 3%OHVV XHVH WRK\GJDIQGVWKKWFKRZH HLFUHL DHEWKRURXJK\ ERKQWW R
\$PHQ

,Q VKDUHG PHDOV WKH JLIW RI IRRGJLIW PDIGHRPRKELQWXRUGBLQJ EFUWKW
XQZUDS VRPH RI WKH 3JLIWV' WKDWKZULEVOMLVPEHQG U&HFULVW MQIRXUVHW
ZRUG WKH FXS DQGDQNM ORELO\LVHMQIQQW DQFRPPKDUH WKH JLIW RI RX
LQ RXU VKDULQJ RDWKCH RIR&K ULQGVW WKIHQD 1%YLCQJR IFRRPUKQWVLQQWJULVK
RI &KULVW LQ HDFK RI XV ZKHQ ZH VLVW GRZQ WFRJHWKH DU DQWOMLH HXFK
:RUOG /LEUDU\ 3XEOLFDFWLRQV S

Living God’s Word

Some families always set an extra place at the table as a sign that guests are welcome to share their circle of nourishment.

Surely everyone is welcome at our eucharistic liturgies.

But do we make that spirit of hospitality a reality in our parishes?

Copyright © 2012, World Library Publications. All rights reserved.

Not by bread alone does one live, but by every word that comes forth from the mouth of the LORD.

— Deuteronomy 8:3b

TRUST IN JESUS

7RGD\QV IHDVW FHOHEUDWHV DQRWKHUPFHQWU
RI WKH (XFKDULVW\ ALINW KWIKTHP (HVMQ FVKHI WKI
%RG\ DQG %ORRG RI &KULVW LQ WQHGXFWIRIGV
EXW FDQ FQOYEHG EHXVW DV WKHZNUBHQLYLVWYH
SXW WKHLU WUXVW LQ *RGV ZRUCRROWKQFWB
ZRUG RI -HVXV ,Q WRGD\QV *RVSHOD-IHV KQ KUR
YHU\ RZQ IOHVK DVQGEIQRIRG HWQHUQD DDUHL FHDGHI
WR WDNH KLP DW KLV ZRUG DQG KSHLQ R RHWQKH I
OLIH IURP RXU SDUWLFLSDWLRQLQ WKH (XFKD

Religious Education Update

REGISTRATION FOR 2017-18

, I UH WXUQLQJ IDHL WKHML F DQS SVO IOHFRVQ MWRDQF M
 WKH 5(2IILFH IRU DDPHSDMVFHZEKRWKDYH DQ RSHQ WXLWLRQ VE IDOSDQ FSHO D
 ZLOO QHHG WR FRQWDEW DHOYDS&RQHUVHQW WR UHJLVW
 1HZ IDPLOLHV VKRXOGIERQ WRFVHWIKHFWSDSS:HWZL DOWWLVQW \RXULQKMHG R
 ZLWK &KULVW ZLWKLVQKDFRKSXQUWLVLVLV L XZ R XVW QHEV PDUWL RQRQ RXUS

FAMILY REFLECTIONS

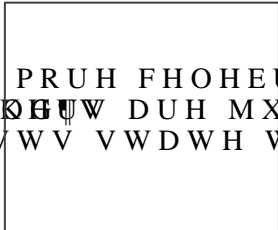
\$V ZH EHJECZMKNHRI RXU 6XPPHU ,QWHQVLYH 5(3NHRJWIDVWIKU
 ZLWK \RX PRUH UHIOHFWLRQV WKDHW UDRDGLUHVODKVRH SDWV MFKLS
 DQG VSLULWXDOUHYHQFWQVWKHU WIKSH SDVW \HDU

- :KLOH SDUWLFLS DDULQJKLQHFKQFZUOIHDXWLQW WKUVRXFKK IZ YDU
 WLRQV« VRUURZ IHHOLQJ ORYRHGZHLQKWMKDV ,OLIWQV DM B
 XQJHVW OHRUXHG QRWRWR EH DIUDLG WR FRQIHVV
- :H HQMR\HG KHOSHQLRQKWI EWQDQ KVRH UHWVSHFIDQW ZKHQ VHHLQJ
 KDQGHG RXW WKH SULJHV ,W ZIRQ VHXZLRGIVQZ KVRKVDGHVMMKRNH DOR
 ZHUH YHU\ LQWHUHVWHG LQ VHHLQJ D ZRPDQ UHGD LQ EUDLOH
- :H ZHUH DEOH WR ZIDFON IIRRG W KDDO GUDUQWV RUKKXKQ Children :H
 OHDUQHG WKDW VWDUYLQJ FKLGRXUHQ FDDQWKH WZLUQK WWRKHXVOD PHHDDOV
 IRU DOO RI XV EXW ZH ZHUH JUDJRHGXODWKH W RXU HIIRUWV ZHQW V

HOW IMPORTANT ARE DADS?



\$OWKRXJK ORWKHU V 'D\ LV JHQHUDDQD PRUH FHOHEUDWV
)DWKHU V 'D\ VWXGLHV VKRZ WKQWFKLQHW DUH MXVW I
 GHYHORSPHQW DV PRWKHU Vher3YndqKerORHL V WV VWDWH WKDW
*fathers do play an important part in their children's lives; that the majority
 of studies affirm that an involved father can play a crucial role particularly
 in the cognitive, behavioral and general health and well-being areas of a
 child's life; that having a positive male role model helps an adolescent boy develop positive gender-
 role characteristics; that adolescent girls are more likely to form positive opinions of men and are better able to relate to
 them when fathered by an involved father; that it is generally accepted, under most circumstances, a father's presence and
 involvement can be as crucial to a child's healthy development as is the mother's; and that experi-
 encing validation of their importance in the general parenting literature has made fathers much
 more conscious of their value and, in turn, leads to their greater desire to be involved.*

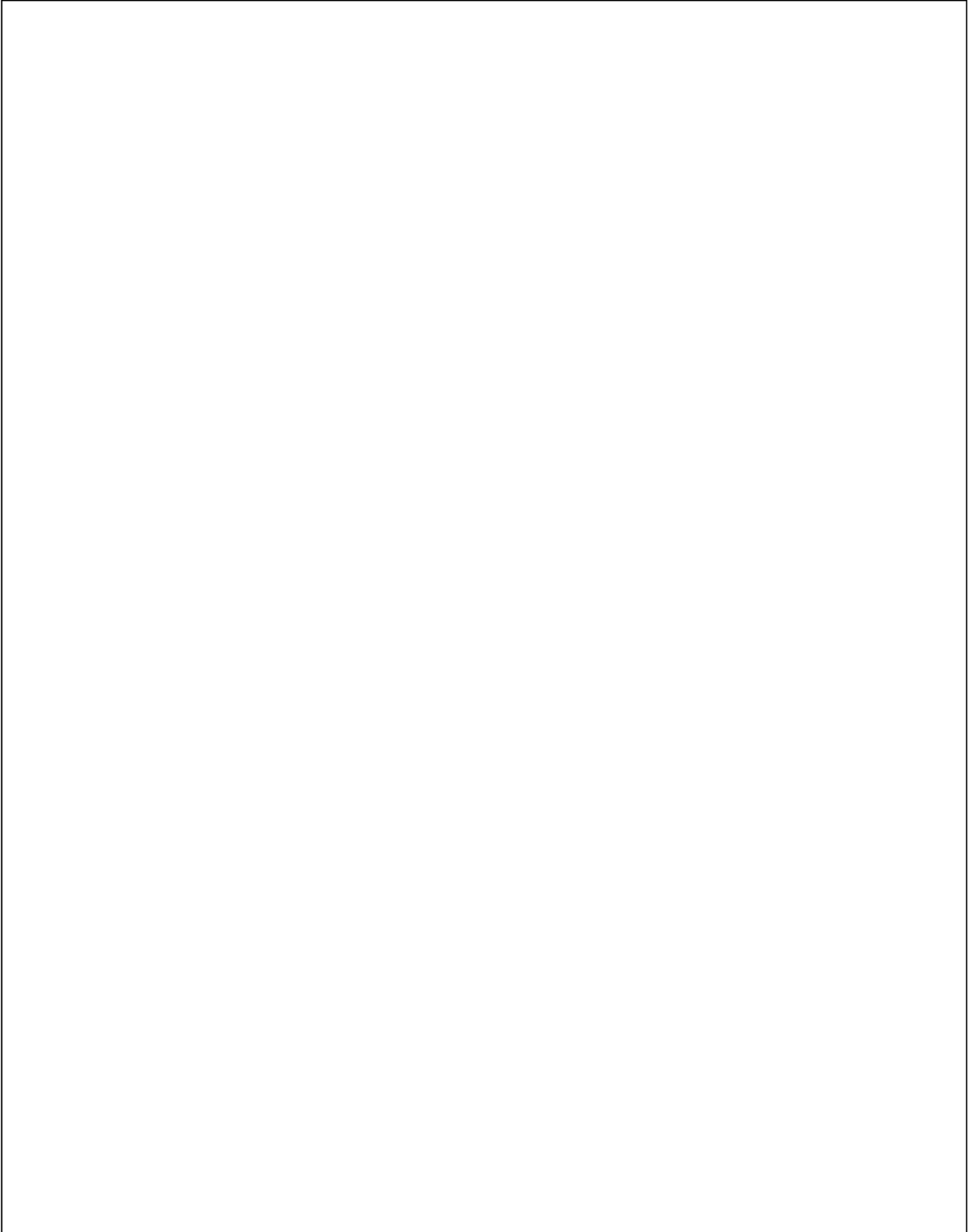


\$ IDWKHU V LQYRQGHQVQDLWK KIRU FKMLOQVRVWIKOVRKEOG
 GHYHORSPHQW DV D KXPDQ EHLQJ ,WQKDDVEGHVQZNRQGHSD
 IDPLO\ VHVVLQRQV«W DHKEDHNS DQGRQSMRFLDXWQH V DQVJHU V

HAVE YOU THOUGHT ABOUT BEING A CATECHIST?

Give something back to God and this community? Help young people? Grow in your own faith?

:K\ ZDLW WR DQVZMexpWikite redsco) " «
 <RX PXVW OLNH DQNEHLV KOHKVGRZHQD PISQH RH DDJRRKOLF IDLWK ,I \R
 DQG DUH XQVXUH DERXW WHDFKLQDE\ RXXXS VZOWK HDQD [EHULHQHFPCR FV
 HDFK JUDGH OHYHQIKHMHVYQH ZLSWKLIRQDFXV R VOKHVU WVRISGDQW DQGRUKHED
 HDFK JUDGH ZLOOHHQD YDLVLDEVDHQVWVWHQ& DDFR DSWRKHQ Q V WYDHU W*HIG ZRU
 YLGHG E\ WKH &KLFDJR 2IILFH)RU &DWHFKHVLV



SAINT ALPHONSUS

Journey of Faith: Birth, Baptism, Belonging

BAPTISM SEMINAR

,I \RX DUH H[SHFWLQJ D EDE\ IDPLO
VKRZHUHG \RX ZLWK JLIWV DQG \RX
DQG GHFRUDWHG D QXUVHU\ ,Q WKH
FRPPXQLW\ WKURXJK WKH VDFUDPHQ
DQG RIIHUV VSKULQGXEDQFRWUHQHMHQV
FKLOG EHLQV D OLIH ORQJ MRXUQH\

2XU %DSWLVPDO 3UHS\DUH\DFW\IR:Q SURJ
Birth, Baptism, Belonging, LV D VHPLQDU WKDW
EHWWHU XQGHUVWDQGD SWKHVDFFKHP
FDQ EH WDNHQ ZKLOH DZDLWLQJ WKH
VKRUWO\ DIWHU WKH VHDPE\QIDU EZLQQ
6DWXUGD\ RI DOWHUODWHDPWVWKR
WKH 5HOLJLRXV (G X KHWLHPL Q DU OGLW

DUHXO\ WKS WHPEHU WK DQG IR
,I \RX KDYH QRW WDWPDQ GSHUH DDEJDSWL
6W \$OSKRQVXV LQ WKH ODVW WKUHH
LQ D %DSWLVP VHPLQDU

&DOO WKH 3DULVK 2IILFH DW
EDSWLVP VHPLQDU D QJWZLWV O GDV

,I \RX RU VRPHRQH \RX NQRZ LV FRQ\SGHULQH MKHR DIQQJZ & DWK
PRUH LQIRUPDWLRQLQHDDWH FRQWDFRQQRDWWVOR DOV RUJ 2XU 5
EH KDSS\ WR DFFRPSDQ\ \RX RQ \RXUPMHHXULQ M\LRQ WKLHWKD O QKHQSG
7XHVGD\ HYHQLQJV IURP SP ± SP

5&,\$ LV IRU WKR VH ZKR

KDYH QHYHU EHHQ EDSWLJHG RU
KDYH EHHQ EDSWLJHG LQ D QRQ &DWKROLF FKXUFK FRPPXC
KDYH EHHQ EDSWLJHG DYH D QKR QIDFHQ W VGRW KHFRQ FLOLDWLR
+RO\ &RPPXQLRQ RU &RQILUPDWLRQ

Lemont Tri-Parish
Summer Weekday Masses

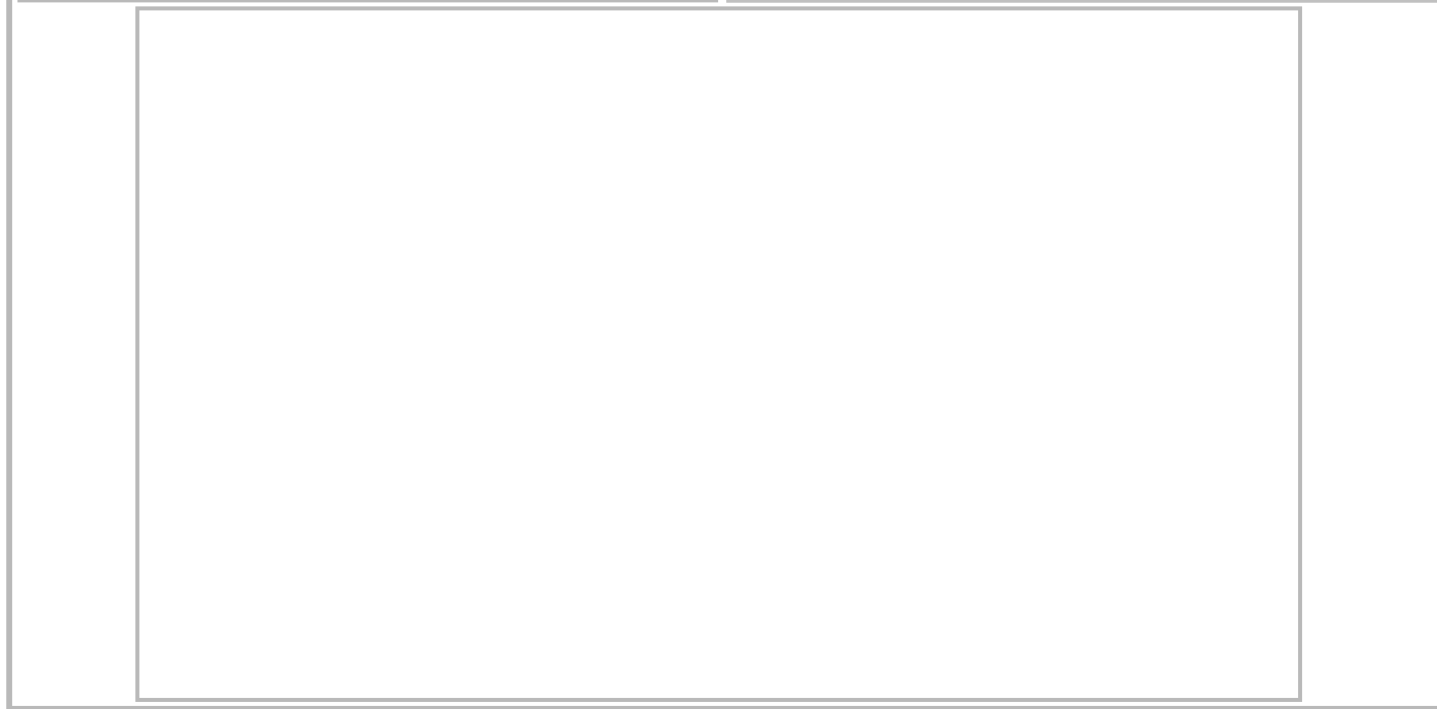
Weekday Mass will be at 7:30 a.m. — Monday ~ Saturday

7KXUVGD\ -XQH VW WKUX)ULGD\ -XQH WK
6W \$OSKRQVDP

6DWXUGD\ -XO\ VW WKUX ORQD\GD\XO\$XJXWV VW WKUX 7KXUV
66 &\ULO 0HWKRGLXV 2 DP 6W 3DWULFN 2 DP



<p><RXQJ \$GXOWV LQ WKHLU</p>	<p>-RLQ XV WKL V VXPPIORUR Q XDS V VHULHV :H ZLQJREH WKHX VH DU Q I ZKHUH ZH ZLOO SDUWQHU ZLWK SI WR KRVW H[FLWLQJ HYHQWV WKDV RQH RI XV FDQ IXUWKHU GHYHORS -HVXV DQG GHHS QLRXUR K WKHU & M IDLWK :H ORRN IRUZDUG WR VHHL WKH HYHQWV EHZ</p>
----------------------------------	---



PLAN ON SAVING THE DATE FOR

086, & 21 7+(/\$:1

:(5(6,1*,1* <285 621 <H DUV 2I \$PHULF

681'\$< -8/< WK

67 \$/3+21686 1257+ /\$:

3OHDVHMRQQRXV BDYU

6HVTXLFHQWHQQL

GARDEN UPDATE

2XU JDUGHQ LV XS DQG UHDG\ WR JR WR 7LP .DWH DQG 7DQQHU 0DWKLDV)DURQ DQG 0DU\ 8PHQWXPSODQWV 'H QMR\ JDUGHQLQJ DQG RU ZDWHULQJ D SDUW RI WKH" JDUGRQSSOURDWHFMDOO WKH 3DULVK 2IILFH HPDL RU WDON WR KHU EHIRUH RU IUXLWV RI RXU JDUGHQ DUH GRQDWH WU\ 7KDQNV VR PFK

:H JUHDWO\ DSSUHFLDWH \RXU RI RXU ORFDO IRRG SDQWULHV PRQWKV DSSURDFK GRQDWLRQ WULHV GHFOLQH 8QIRUWXQDWHO\ V WKLW LQ PLQG ZH ZLOO EUHDN IURP WKH PRQWK :H DVN WKDWDQX FRQW LWHPKDW \RX FDQ DQKHPSURHGWDW\VGR \RX SURYLGH DUHQSKLPSWUWDFQWOO WR RXU IHDWXUHKLONPRXHIRXU\RXU DQG JHQHURVLW\

HELP NEEDED for JUNE 30th SOUP KITCHEN

7KH 6W \$OQV :RPHQV & OXE QHHGV \RXU YKHOSQW\HWU\RXNU\ZLPH\ LQJ GLQQHU IURP WR S^WPDWQ)KHLGD\EUNDN &DQWHLU CLQQDRWHLDQ ORZLQJ LWHPV OLWV\HGRIHQDORZRQRQDSDHDFLEWUHGDIQQ FDQ EH PDC \$OQV :RPHQV & OXE' ,I \RX FDQ GRQDMDVIDIQRLQWHPFWRUDVROUXQW HBNJ PYDXJKQ#VSULQJQHW WIRPQV)DQG PRODFDQUEHGRQURISSEH RII DW WKH FH /RJDQ /HPRQW E\ QRKQ&RQPPXQHW\ VHUYLFH KRXUV ZLOO EH RIIHUH

- +DPEXUJHU SDWWLHV VVHUV WUD\ SDFNDJHV RI FHOHU\
- 3DFNDJH RI +RW GRJY UXLW 6DODG SDFNDJHV RI FDUURWV
- 3DFNDJHV RI %UDWV\HWXFXH FRQWDLQHUV RI 9HJLLH
- +DPEXUJHU +RWGRJ FXPQWR
- OEV 3RWDWR 6DODG VOLFHV RI \$PHULFDQ &KHHVH
- OEV RI &ROH 6ODZ VOLFHV RI &KHGGDU &KHHVH
- FDQV RI %DNHG %HDEY EDJV RI SRWDWR FKLSV

“TO EVERYTHING THERE IS A SEASON AND A TIME FOR EVERY PURPOSE UNDER HEAVEN.”

“A Time to be Born through Baptism” —

/LQN)UDQFLV VRQ RI 'DQ 0DUJDUHW 'H
%ODNH 7KRPDV VRQ RI 7KRPDV \$VKOH\
1RPL (OOH GDXJKWHU RI)UDHJHU 0RQL
/XNDV -RQDV 6RILD *UDFH FKLOGUHQ
0LQGDXJDV 7DPP\ 6LQNI

“A Time to Love in Holy Matrimony” — Congratulations to:

“A Time to Heal” —

-RHWWD .D%DEV .HQQHWK'RURWK\ *RXVOKHDDQLH :LODDWVFLD 'HGHN
0DU\ 7DGGD*UJH +RJHU 5REHUW 7URFNDUO .QDVLDN&DUVRQ /HH 8PHQW
5D\ 'HIDUGDVFKDHO +DOO.HQ &RQYDOOHLQD 5XLJ 'DYLGIHQQ
'RQQD 0XUSKULH :LHWUJ\FKIQ *DUULV\$QKOH\ 6PLWKLPLWJHILNDXVNDV
'RQDOG %R]DUU\ 6RILQRZV*QDQ\ 7RJOLDVW-HUJLQJ &KDUOHQH &RXQWI
6KLUOH\ &HUPQEKNSHV *HUWUXGH 6PLMK :RRGV 9LFWRULD \$QQDULC
+DUULVRQ \$HQH 0DODN -RKQ 5XSSHUWDU\ (QGH (GZDUG 0HJDQ
-RKQ 5RVVL-RVHSK %DULVDV\GHQ (GZDUEKDHO %URPEHUHN ROSH
6XVDQ /XFKHRQ 5LQJ)UDQ 8UEDQ *HRUJH 'XGQHRQDOG 5LWWHQKR
7KHUHVH 'HYH\$QH 9DQ 0HWHRE -RUGDQ &HFLOLD \$XJXVW\Q
6KDQDDKRIQPW] \$QLWD %URPEHUHN

“A Time of War” --

6FRWW %RVFR 86\$.XZBWXD 3OXFLQVNL 86 \$QGUZRZFH%RVNR -U 86I
&KULVWRSKHU 'XUNRYLF 86\$ 6 .RUHD L*HULDD\ %HDFK
-DNH +RIIPDQ 86 \$UP\ -DFRE &KULVWLQH 86 IDQ DOO ZKR VHUYH RXU

“Time to Die” --

1LMROD %DURQHV

7KH PLOLWU\ DQG LQQRFHQW FLYLOLDQV ZKR KDYH G

Please keep all these listed, and their families, in your prayers.

Are You Registered?

5HJLVWHULQJ LQ D SDULVK LV D GHWOBUDW&LRQKRIO\IRXFRGHXQUW\WRQGHW
FRPPLWPHQW LQ DOO LWV GLPHQVLVWUHQHFRDQLWRLRQLIQG EHQ\SRQYDQW
LQJ D UHJLVWHUHQHSDWKNSLURQFHVPEXFKVHYZPHURZIKHQIDQW EDSWLP
UHJLVWUDWLRQ ZHGGLQJV RU ZKHQEDVWHIGQWRSRQVIR EDSWLPDO RU FR

5HJLVWHULQJ KHUH LV YHU\ VLPSOHW.st-ar.RrgFDCRRN WRGRKHU 3ZBEISVKH5HJLV
RXW WKH QHHGHG LQIRUPDWLRQ <RQIRXQVFR RHH LIQWWRU VWHRRQ IIRFHP DQG I
,I \RXU WLPH LV OLHLWHIG IRRX KIRQLHWDDQGDUMKHEQOOHFWLRQ EDVNHWR R
RIILFH

\$ UHJLVWHUHG SDULVKLRQHU UHFEDZHVGDDOHSW WIKDKWPVHOLUQJWRU&HXU
SDULVK UHJLVWUDWLRQ :H DFFHSM DIQRQRH EJR SDIQWVK WHHDKUDGOH VQ

5HPPHEHU WKDW \RXLQWHG HGR SDHU DVKHLQ QDQO WRKSDUHWYDNL FHV WKDW 6W
VLJQ XS" <RX DUH VXUHO\ ZHOFRPH

Weekly Offering

-XQH

:HHN¶V 1HHG
 6XQGD\ &ROOHFWLRQ
 (OHFWURQLF)XQG ()7
 6XUSOXV 'HILFLW
)LVFDO <HDU WR 'DWH
 6XUSOXV 'HILFLW
 /DVW <HDU¶V :HHNO\
 &ROOHFWLRQ

Thank you for your support of our parish.

Electronic Fund Transfer

(OHFWURQLF)XQG 7UDQVIHU ()7
 PDWLFDOO\ KDYLQJ \RXU FRQWULEXWLRQ RIIHULQJ WUDQVIHU
 IURP \RXU FKHFNLQJ RU VDYLQJ DFFRXQW WR 6W \$O¶V DFFRXQW
 :KDW ZLOO ()7 GR IRU \RX"

- 1R PRUH FKHFNLQJ ZULWLQJ
- 1R PRUH UHPHPEHULQJ \RXU HQYHORSH
- 1R PRUH ORRNQJ IRU WKH FRUHFHW FXUUHQF\
- \$XWRPDWHG UHFRUG NHHSLQJ
 :KDW ZLOO ()7 GR IRU 6W
- <RX RIIHULQJ DUULYHV HYHQ ZKHQ \RX DUH QRW DEOH WR
 DWWHQG PDVV
- <RX KHOS XV VLPSOLI\ RXU UHFRUG NHHSLQJ
 IRUPDWLRQ.usccb.org/peters-pence.
- :H DUH EHWWHU DEOH WR SODQ DQG EXGJHW

,I \RX ILQDQFLDO VLWXDWLRQ FKDQJHV \RX PD\ FKDQJH RU
 VWRS \RXU SD\PHQW DW DQ\ WLPH DOORSLYVLFH
 7R VLQJ XS IRU (OHFWURQLF)XQG QYHU FRPSGHWH WKH QH[W 6H
 UHTXHVW IRU DQ ()7 IRUP 5HWXU WKH FRUHFHW ZLOO SKRQVW DUFKSHD
 PDLO RU SODFH LQ WKH FROOHFWLRQ EDVNHWWQDUNQHGK\$WWDWHUHG E\
 &HQWHU <RX ZLOO EH VHQW DQ (IRUP ZLWK PRUH DQ IRU
 PDWLRQ DERXW WKH ()7 SURFHVV
 ,I \RX KDYH DQ\ FRUHFHWLQJ V &HWDVH FDQ WKH
 SDULVK RIILFH

Thank you for your sacrifice and generosity
 to the Fund for Retired Priests in last weekend's
 second collection.

Second Collection

Saturday &
 Sunday
 June 24 & 25

1H[W ZHHN RXU
 RQG FROOHFWLRQ
 EH IRU 3HWHU¶V
 ZKLFK SURYLGHV 3RSH)UDQFLV Z
 \$WRVFDUU\ RXWHZIRU FKIDURXWIDGOWK
 7KH SURFHGHV EHOHLLW RXU EURV
 PDUJLQV RI WRFLHW\ LQFOXGLQJ
 VLRO DQG GLVDVWHUV 3OHDVH I
 IRUPDWLRQ.usccb.org/peters-pence.

SENIOR KINDRED SPIRITS
 &RPH MRLQ XV DW WKH QH[W 6H
 QYHU FRPSGHWH WKH QH[W 6H
 WKH FRUHFHW ZLOO SKRQVW DUFKSHD
 EDVNHWWQDUNQHGK\$WWDWHUHG E\
 IRUP ZLWK PRUH DQ IRU
 2XU PHHWLQJ ZLOO EH 7XHVG D\
 DP LQ WKH 6W \$OSKRQVXV 3
 3OHDVH FDQ .HOO\ 0DUJDOXV D
 7KXUVD\ -XQH QG LI \RX DUH
 DWWHQGLQJ WKLW PHHWLQJ



Electronic Funds Transfer Request Form

1DPH BBB
 \$GGUHV BBB
 &LW\ =LS BBB
 3KRQH BBB
 (QYHORSH 1XPEHU BBB

Counseling By Fr. Rohrich

&RXQVHOLQJ VHUYLFHV DUH DYDLOD
 BBB
 &XVWHU \$
 ZHHNGD\ V DUH DQDQG DQDQG SP)
 BBB
 HQJDJHG DQG PD
 XDOV IRU GHSUHVHVVHQDQJH
 BBB
 SHUVRQDO SUREOHPV 7K
 HDFK VHMDOQ FDQ

Mass Intentions

6DWXUGD\ -XQH
 DP 2 3DULVKLRQHUV RI 6W \$OSKRQVXV DP 2 3DULVKLRQHUV RI 6W \$OSKRQVXV
 SP 2 /LYLQJ 'HFHDVHG)DWKHUV RI 6W \$OSKRQVXV SP 2 /LYLQJ 'HFHDVHG)DWKHUV RI 6W \$OSKRQVXV
 ,Q 7KDQNVJLYLQJ WK :HGGLQJ \$QQLYHUVDU\ 3KPOLV -RVH\$KLVWLSM
 'HDFRQ *LE DQG -L DQGH (QGH 3HGUR (V FENIGR
6XQGD\ -XQH (XJHQH *LE DQGH (Predobic
 DP 2 /LYLQJ 'HFHDVHG)DWKHUV RI 6W \$OSKRQVXV **6XQGD\ -XQH**
 DP 2 /LYLQJ 'HFHDVHG)DWKHUV RI 6W \$OSKRQVXV 3DULVKLRQHUV RI 6W \$OSKRQVXV
 DP 2 /LYLQJ 'HFHDVHG)DWKHUV RI 6W \$OSKRQVXV 3DULVKLRQHUV RI 6W \$OSKRQVXV
 SP 2 /LYLQJ 'HFHDVHG)DWKHUV RI 6W \$OSKRQVXV 3DULVKLRQHUV RI 6W \$OSKRQVXV
ORQGD\ -XQH DP 2 %UDQGRQ -DQGRQNL 2
 DP 2 3DWULFLD & GEdn Rittenhouse 0DU\ / 6W DQGRQNL 2
 +HDOLQJ IRU 'HEBIL & Mrs. Anne Sherty -HDQHWWHMAD HIRKEY
7XHVGD\ -XQH 0DU\ *RUFAMILY & Friends
 DP 2 \$QQDEHOOHGEdn Rittenhouse DP 2 -DFN 6B&DManeHerb
 -HDQHWWHMAD HIRKEY 2UYLOH 0LOGUG 7HVVXBnn Eder
 :HGQHVGD\ -XQH +DUU\ - -XQH
 DP 2 0DULO\Q 0LDn D Gilda Rittenhouse -RVH\$KLVWLSM)UHHKDPXLBond Qover
 5LWD =R Gdn NL SP 2 3DULVKLRQHUV RI 6W \$OSKRQVXV
7KXUVGD\ -XQH
 DP 2 7RP /\ QF Alphonus Parish
 5RVH 0LWFKH0Em0JLHUD
)ULGD\ -XQH
 DP 2 %LOO -DQWely KingdHU 2

5(\$,1*6)25 7+(:((.
 0RQGD\ &RU BV 0W
 7XHVGD\ &RU 3DV 0W
 :HGQHVGD\ &RUV EFW
 7KXUVGD\ &RU 3V E
)ULGD\ 'W 3V -Q
 0W
 9LJLO -HU 3W
 3V
 3V 5RP
 0W

3/(\$6(127(,I\RX DUH FHCHEUDWRFDFVLRQ6ZWCGLGJ
 DQQLYHUVDU\ HVEOHVYQLQHHRKHMMQDQDRI YRZV DUN 'D\,V
 PHQVW PXVW EH PDGH LQ DGYDQFH E\ FDOOLQJ WKH\$DUVVK 2IILFN
 7KH EOHVVLQJ DQGRZVHQBHZUWWDNH 6XQGD\ DIW -HU 3V 5RP
 0DVV

Liturgical Ministers Schedule

'DWI	7LPH	/HFWRU	0LQLVWF	6HUYHU\	0XVLF
-XQH	SP	' -RVH\$KLVW	* 5LWWHQ \$ 3DVFHQW % 5RJHUV & /HYDV	.D\H)DPLO	&DQWRU (QV .H\ERDUG
-XQH	DP	' (QGH	* 8PHQWXP 6 .RVWHV 5 0H\HU	.RVWHV)D	
	DP	3 %URZQH	0 %UXQR \$ 3DGDOLN 7 0DWKLDV	&DOKRXQ)	&DQWRU (QV .H\ERDUG
	DP	+ 0LFKQLDN	'HDFRQ %LC % %XUNH ' .RUQDFNI 3 0DODN)LOLSHN ' 6FXPDFL	&DQWRU (QV .H\ERDUG
	SP /HPRQW 7UL 3DU 0DVV D 6W 3DV				&RPPXQLRQ XQGHU ERWK VSHFLHV

Gather Hymnal
Mass Of Creation
 *ORULD
 *RVSHO
 \$FFODPDWLRQ
 HPEOH
 +RO\ +RO\
 0HPRULDO
 \$FFODPDWLRQ
 *UHDW \$PHQ
 /DPE RI *RG

6W \$OSKRQVXV %XQGHVDFDWRZHEIN6W \$OSKRQVXV
 &DWKROLF &RPPXQLW\ RI /HPRQW ,00WRQV SOO ULJKWV UHVHUYHG
 E\ - 6 3DOXFK &R ,QF 6FKLOOHU 3DUN ,OOLQRLV